



FUNGOM[®]

**SHENZHEN JIAXUN
INDUSTRIAL CO., LTD.**

PRODUCT CATALOG

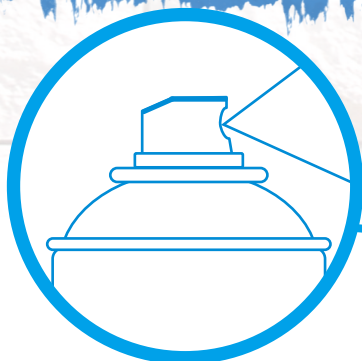
Company Profile

Shenzhen Jiaxun Industrial Co., Ltd. is an enterprise integrating R & D, production, marketing and value-added services. The core business involves the E.P. paint and accessories, green household products, environmental friendly and energy-saving fine chemical products.

Aiming at setting up a top brand of our own, we make endeavor to improve product quality and satisfy our customers with excellent services. As a manufacturer of high-tech chemical products, we are the most competitive enterprises in this field. Not only Volume of production and sales is consecutively No. 1 in domestic trade , but also successfully well-sell to more than 70 countries and regions, such as the United States, Europe, Japan etc.

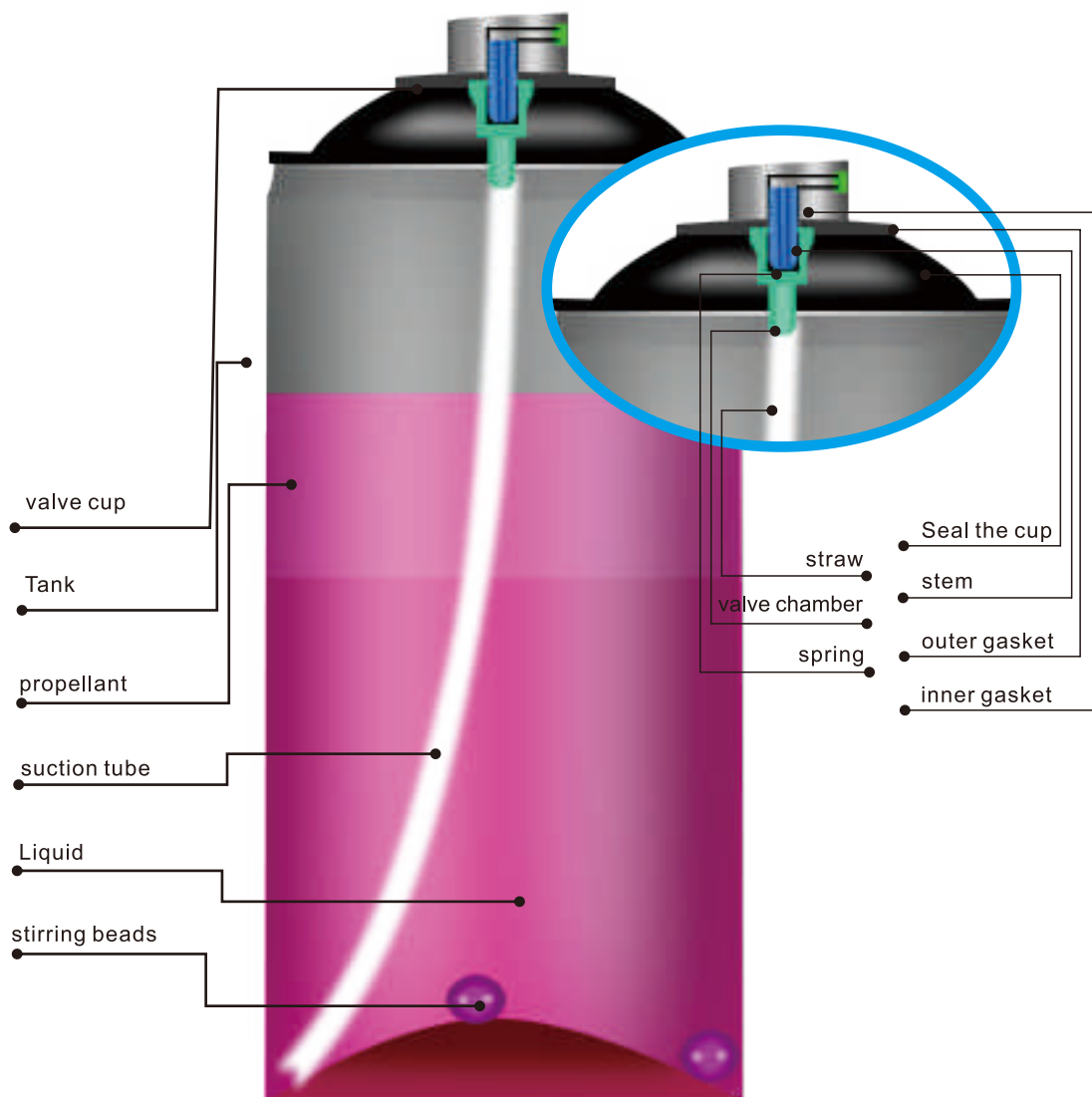
Status of international OEM:

Due to potential R&D capability of new products and manufacturing advantage, we could provide professional & complete product solutions, contribute to the client's brand and marketing channel construction. Meanwhile our kind and professional after-sales services enable us obtain more and more client's trust and praises.





AEROSOL CAN PROFILE



Warmly welcome for **OEM** order, we are confidence of making first-class products for our valuable customers.

ODM BUSINESS PROCESSES

Customer's goods •
Design standards •
Customer branding •

1

Our current product design •
We develop new products •
for development

2

Make samples •

3

We buy materials •
mass production •

4

Delivery schedule •

5



OEM BUSINESS PROCESSES

1

- Customer's formula
- Customer's brand
- Customer's packaging
- Design standards

2

- Customer's samples
- Make samples

3

- Customer configuration

4

- We source materials for
- Mass production

5

- Delivery schedule



DIRECTORY

SPRAY PAINT ————— 01 / 14

SPRAY LUBRICANT ————— 15/17

CAR CLEANER ————— 18 /21

CAR PAINT MAINTENANCE ————— 22/23

CAR MAINTENANCE ————— 24/25

HOUSEHOLD CARE ————— 26/27



SPRAY PAINT





INTERIOR/EXTERIOR SPRAY PAINT

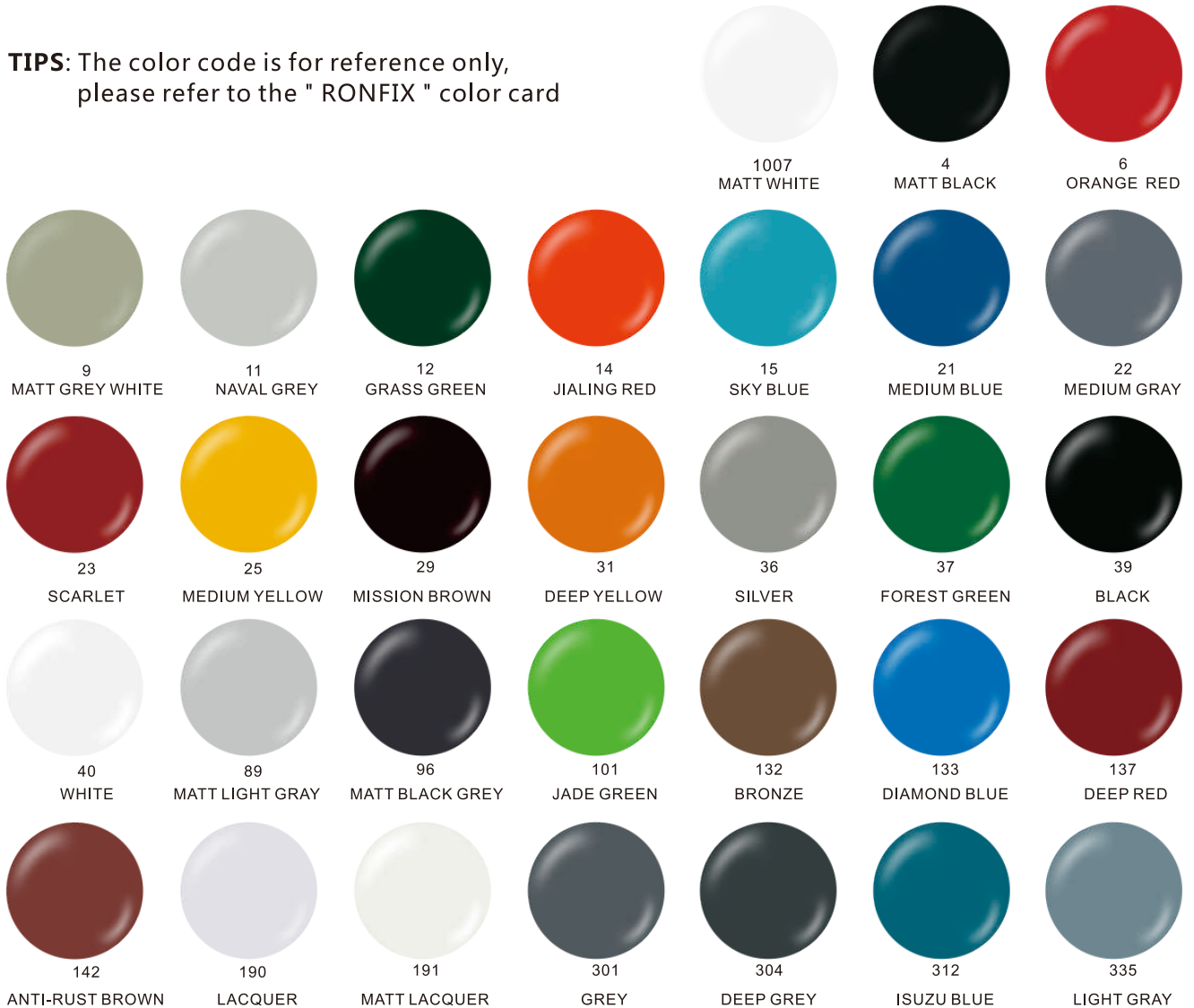
- Weather resistance, good leveling, strong coverage
- Great for high build and more
- Interior/exterior use
- Great for iron & steel and plastics finish.

ITEM NO. : SP-001

PACKING: 400ml/can

12pcs/ctn

TIPS: The color code is for reference only, please refer to the "RONFIX" color card



FLUORESCENT SPRAY PAINT

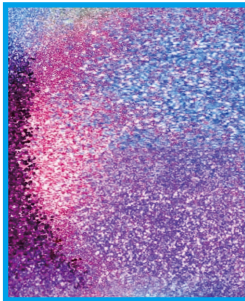


- Fast-drying
- Indoor/outdoor
- Excellent fluorescent effect
- Excellent hardness and flexibility.
- Excellent protection against rust, impact, UV etc.
- Avoid contacting with gasoline and organic solvents.
- Great for metals, wood finished surfaces, glass, ABS and more

ITEM NO. : SP-006

PACKING: 400ml/can

12pcs/ctn



1001
FLUORESCENT RED



1002
FLUORESCENT PINK



1003
FLUORESCENT GREEN



1004
FLUORESCENT BLUE



1005
FLUORESCENT YELLOW



1006
FLUORESCENT ORANGE



1008
SUNSHINE-TOLERANCE
LACQUER



1009
FLUORESCENT
WHITEBASE



1010
FLUORESCENT
WHITE



1011
FLUORESCENT
ORANGE YELLOW



1012
FLUORESCENT
MAGENTA



1013
FLUORESCENT
VIOLET

TIPS: The color code is for reference only,
please refer to the "RONFIX" color card

HAMMER FINISH SPRAY PAINT

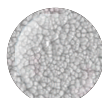


- Provide films with hammer finish effect
- Excellent durability indoors and outdoors
- Fast drying
- Superior corrosion resistance
- Great for metal, wood, glass, and more

ITEM NO. : SP-007

PACKING: 400ml/can

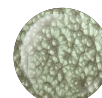
12pcs/ctn



A00
SILVER



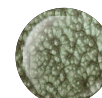
A03
BROWN



A06
LIGHT YELLOW GREEN



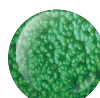
A11
GREY



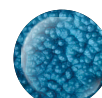
A12
MEDIUM YELLOW GREEN



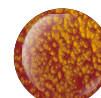
A13
DEEP GREEN



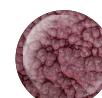
A17
GREEN



A18
BLUE



A19
GOLD



A22
PURPLE

TIPS: The color code is for reference only,
please refer to the "RONFIX" color card

HEAT RESISTANT SPRAY PAINT

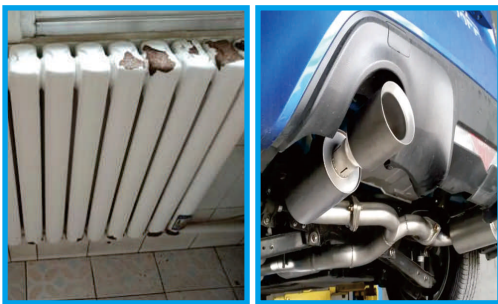


- Heat Resistance within 600°C
- Waterproof, Weather ability & Resistance to Moisture
- Avoids Contacting with Gasoline
- Applied to chimney, auto's & motor's exhaust pipe and more

ITEM NO. : SP-008

PACKING: 400ml/can

12pcs/ctn



1200
BLACK



1300
SILER



1400
WHITE



1602
REO



1700
GREN



1800
BLUE

TIPS: The color code is for reference only,
please refer to the "RONFIX" color card



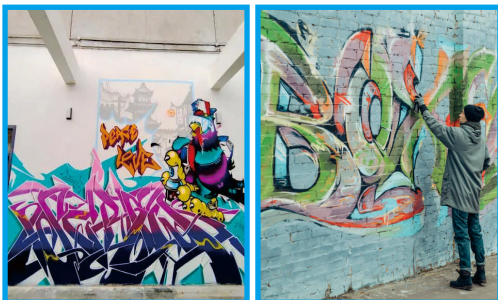
Graffiti Spray Paint

- 100% acrylic resin.
- Quick drying, not drip or crack.
- Ensures precision without excessive
- For graffiti street art and mural use.

ITEM NO. : SP-009

PACKING: 400ml/can

12pcs/ctn



4
MATT BLACK



6
ORANGE RED



13
FRESH GREEN



19
LIGHT SKY BLUE



25
MEDIUM YELLOW



37
FOREST GREEN



39
BLACK



40
WHITE



41
ART YELLOW



137
DEEP RED



190
LACQUER



327
DEEP VIOLET

TIPS: The color code is for reference only,
please refer to the "RONFIX" color card



GOLD EFFECT SPRAY PAINT

- Fast drying, excellent hardness and flexibility.
- Provide a film with metal effect.
- Avoid scrubbing and clashing.
- Great for metals, wood, glass, ABS and more

ITEM NO. : SP-002

PACKING: 400ml/can

12pcs/ctn



R-3049
BRIGHT GOLD

TIPS: The color code is for reference only,
please refer to the "RONFIX " color card



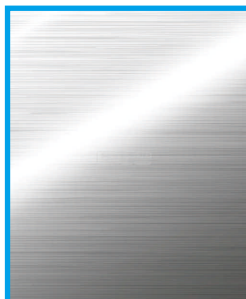
CHROME EFFECT SPRAY PAINT

- Fast drying.
- Excellent hardness and flexibility
- Provide a film with metal effect.
- Avoid scrubbing and clashing
- Great for chrome plated needed

ITEM NO. : SP-003

PACKING: 400ml/can

12pcs/ctn



R-3012
BRIGHT CHROME

TIPS: The color code is for reference only,
please refer to the "RONFIX " color card

GOLD POWDER CLEAR METALLIC

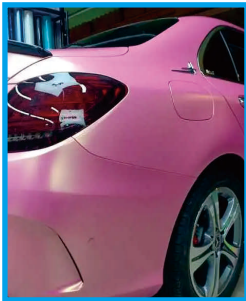


- Provide films with clear metallic effect
- High build, strong hiding power.
- Fast drying
- Interior/exterior use

ITEM NO. : SP-004

PACKING: 400ml/can

12pcs/ctn



TIPS: The color code is for reference only,
please refer to the "RONFIX " color card

SUPER METALLIC SPRAY PAINT



- Indoor/outdoor use
- Brilliant metallic finish
- Durable, corrosion-resistant
- High build, strong hiding power, fast drying

ITEM NO. : SP-005

PACKING: 400ml/can

12pcs/ctn



TIPS: The color code is for reference only,
please refer to the "RONFIX " color card

CALIPER SPRAY PAINT



- quick-dry, strong adhesive and anti-corrosion
- enhance the color fullness, brightness and cool
- High temperature resistant primer

ITEM NO. : SP-010

PACKING: 400ml/can

12pcs/ctn



1200
BLACK



1300
SILER



1400
WHITE



1602
RED



1700
GREEN



1800
BLUE

TIPS: The color code is for reference only,
please refer to the "RONFIX " color card

Plastic Primer



- Fast-drying
- Enhance the adhesion
- Great for the refurbishment and coloring of various glossy plastics

ITEM NO. : SP-011

PACKING: 400ml/can

12pcs/ctn



190
LACQUER



191
MATT LACQUER

TIPS: The color code is for reference only,
please refer to the "RONFIX " color card

SITE MARKING PAINT

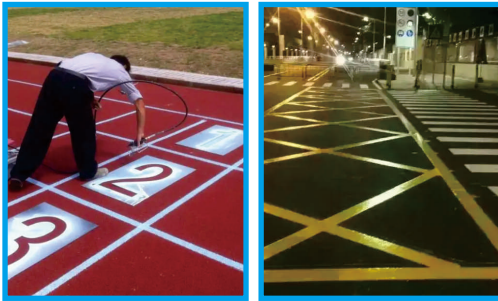


- Bright color, water proof and dirt resistant
- Apply for various places as rode, stadium, school, garage, warehouse, etc.

ITEM NO. : SP-012

PACKING: 400ml/can

12pcs/ctn



04
MATT BLACK



06
ORANGE RED



15
SKY BLUE



31
DEEP YELLOW



37
FOREST GREEN



39
BLACK



40
WHITE



1007
MATT WHITE

TIPS: The color code is for reference only, please refer to the "RONFIX" color card

ECO SPRAY PAINT



- Eco-friendly, no benzol, lead & DCM
- Comply with RoHS standard

ITEM NO. : SP-013

PACKING: 400ml/can

12pcs/ctn



04
MATT BLACK



06
ORANGE RED



15
SKY BLUE



31
DEEP YELLOW



37
FOREST GREEN



39
BLACK



40
WHITE



1007
MATT WHITE



35
GOLD



1680
1680 SILVER



R-3049
BRIGHT GOLD



R-3012
BRIGHT CHROME

TIPS: The color code is for reference only, please refer to the "RONFIX" color card



WATER BASED SPRAY PAINT

- Water based formula, fast dry without VOC
- Apply on interior color spray and decoration

ITEM NO. : SP-014

PACKING: 400ml/can

12pcs/ctn



04
MATT BLACK



06
ORANGE RED



15
SKY BLUE



31
DEEP YELLOW



37
FOREST GREEN



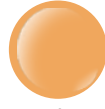
39
BLACK



40
WHITE



1007
MATT WHITE



35
GOLD



1680
1680 SILVER



R-3049
BRIGHT



R-3012
BRIGHT CHROME

TIPS: The color code is for reference only,
please refer to the "RONFIX " color card

WHEEL SPRAY PAINT

- Fine Atomization and self-drying
- Strong adhesion, lasting color and luster, weather resistance,
- For repairing scratches, corrosion and discoloration

ITEM NO. : SP-015

PACKING: 450ml/can

12pcs/ctn



04
MATT BLACK



06
ORANGE RED



15
SKY BLUE



31
DEEP YELLOW



37
FOREST GREEN



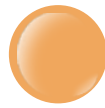
39
BLACK



40
WHITE



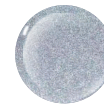
1007
MATT WHITE



35
GOLD



1680
1680 SILVER



2577
FINE SILVER



2591
SILVER PLATING

TIPS: The color code is for reference only,
please refer to the "RONFIX " color card

HEAT RESISTANT LACQUER

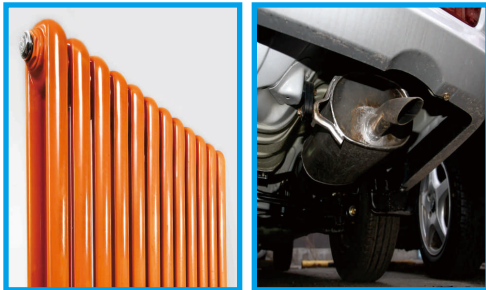


- Heat Resistance within 250°C
- Waterproof, Weather ability and moistureproof
- Avoid contacting with Gasoline
- Applied to chimney, auto's or motor's exhaust pipe, and more

ITEM NO. : SP-016

PACKING: 400ml/can

12pcs/ctn



190
LACQUER



191
MATT LACQUER

TIPS: The color code is for reference only,
please refer to the "RONFIX" color card

Frosted glass spray paint



- Transparent thick liquid
- Suitable for daily household window glass, glass door, office glass partition, hotel glass and other glass on the frosted spraying.

ITEM NO. : SP-017

PACKING: 400ml/can

12pcs/ctn



190
LACQUER



191
MATT LACQUER

TIPS: The color code is for reference only,
please refer to the "RONFIX" color card



DIY WALL REPAIR SPRAY PAINT

- Fast dry to form coating, no pill off
- Apply for mildew & yellowing, dirt & graffiti on wall

ITEM NO. : SP-018

PACKING: 400ml/can

12pcs/ctn



40
WHITE



1007
MATT WHITE

TIPS: The color code is for reference only,
please refer to the "RONFIX " color card



LINE MARKING PAINT

- No CFC's.
- Quick drying.
- Visible markings.
- Weather-proof.
- Suitable for use on timer, bitumen, concrete
- surfaces and soil.

ITEM NO. : SP-019

PACKING: 750ml/can

12pcs/ctn



04
MATT BLACK



06
ORANGE RED



15
SKY BLUE



31
DEEP YELLOW



37
FOREST GREEN



39
BLACK



40
WHITE



1007
MATT WHITE

TIPS: The color code is for reference only,
please refer to the "RONFIX " color card



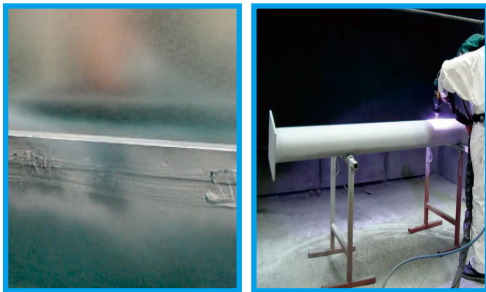
ZINCIFICATION SPRAY

- Excellent for rust protection

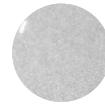
ITEM NO. : SP-021

PACKING: 400ml/can

12pcs/ctn



COLD GALVANIZING
ZINC SPRAY



BRIGHT ZINC
SPRAY



DECORATION
ZINC SPRAY

TIPS: The color code is for reference only,
please refer to the "RONFIX " color card



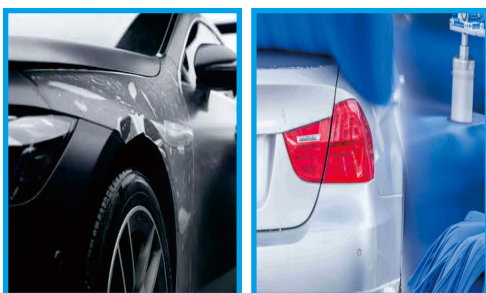
CAR PAINT

Car Paint is a high quality, fast-drying lacquer for the repair of car parts, based on the original car colours. Car paint is very suitable for repairing scratches, stone chip damage and small dents.

ITEM NO. : SP-020

PACKING: 400ml/can

12pcs/ctn



6
ORANGE RED



9
MATT GREY WHITE



14
JIALING RED



15
SKY BLUE



31
DEEP YELLOW



37
FOREST GREEN



39
BLACK



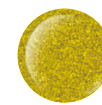
40
WHITE



125
SILVER GREY



157
ENGINEERING ORANGE RED



139
CYAN GOLD



1680
1680 SILVER

TIPS: The color code is for reference only,
please refer to the "RONFIX " color card

SPRAY PAINT RAL standard



FEATURES:

Acrylic-based aerosol paint colored according to RAL standard, ideal for painting scratches and dents formed during mounting of metal tiles and other types off roofing. Full color match. Also can be used for painting metal, wood, plastics, stone and concrete. Protects against corrosion, weather and wear resistant.

DIRECTION:

1. Use in warm, dry and windless weather or in a well-ventilated area.
2. Clean and degrease the surface thoroughly.
3. Mix the paint well by shaking the can during 1 min.
4. Apply in thin coats from 20cm distance from the surface to be painted.
5. After use turn the can upside down and clean the spray valve by pressing it until clear gas comes out.

ITEM NO. : SP-023

PACKING: 400ml/can

12pcs/ctn



TIPS: The color code is for reference only, please refer to the "RAL" color card



PAINT REMOVER



Features:

The paint remover can be used to remove self drying alkyd coatings, amino coatings, nitro coatings, acrylic coatings and some epoxy coatings, low temp. cured coatings. It is mainly used for the parts of autos, motors, machine, equipment, etc. where the coatings need to be removed.

Directions:

1. Shake well before spraying.
2. Spray the paint remover on the surfaces which need removing the coating.
3. Wash the surface by water or air after 3 minutes to remove the coatings.
4. Test spray in a small inconspicuous area for unidentified material.



ITEM NO. : SP-022

PACKING: 400ml/can

12pcs/ctn



SPRAY LUBRICANT

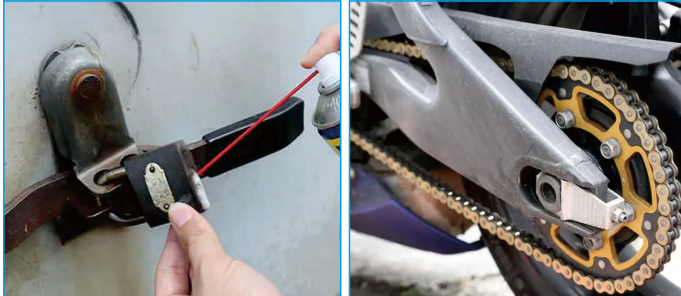


ANTI-RUST LUBRICANT

- Excellent penetrating, derusting and lubricating performance.
- Infiltrate rust, glue dirt, lubricate moving machinery and parts.
- Form protective film to isolate moisture and other corrosives, prevent oxidation and rusting.

ITEM NO. : SL-001

PACKING: 450ml/can 12pcs/ctn

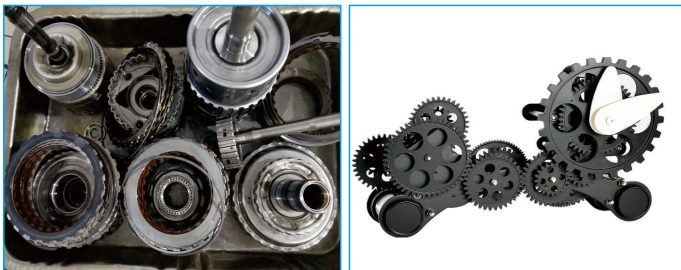


SILICONE SPRAY

- Contains colorless, transparent and high-purity silicon oil
- Excellent lubricating and glazing
- Suitable for power tool, doorsill, woodworking machinery, etc.

ITEM NO. : SL-002

PACKING: 450ml/can 12pcs/ctn



GREASE SPRAY

- High purity with excellent infiltration, lubrication and anti-rust effect.
- Suitable for chain, gear, hinge, etc.

ITEM NO. : SL-003

PACKING: 450ml/can 12pcs/ctn





CHAIN LUBE

- All-weather use.
- Special 'Dry Formula' has superior penetrative quality, creating a durable and protective layer.
- No messy white residue.
- Suitable for chain. Avoid touching with brakes.

ITEM NO. : SL-005
 PACKING: 450ml/can 12pcs/ctn

RUST INHIBITOR

- All-weather use.
- Special 'Dry Formula' has superior penetrative quality, creating a durable and protective layer.
- No messy white residue.
- Suitable for chain. Avoid touching with brakes.

ITEM NO. : SL-004
 PACKING: 450ml/can 12pcs/ctn

DEGREASER

- Advanced formula.
- Quickly and safely eliminates built up oil, grease and grime.
- Suitable for metal, rubber, plastic and seals.

ITEM NO. : SL-006
 PACKING: 450ml/can 12pcs/ctn



COPPER SPRAY

Description:
 High temperature, quick-drying copper grease. It reduces friction of metal parts, prevents seizures and squeaking. Protects screws, nuts and bearings against corrosion. The product is resistant to water and weather conditions. It improves tightness of screwed connections. Operation range: -30° C - 1100° C

ITEM NO. : SL-007
 PACKING: 450ml/can 12pcs/ctn





CAR CLEANER





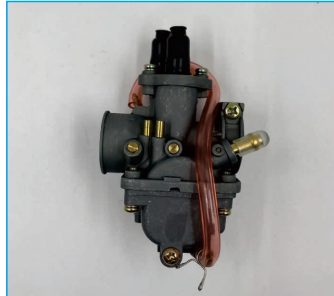
CARBURETOR STRONG CLEANER

- Easily flush off the charcoal residue
- Safe for catalytic cracking transducer and oxygen sensor.
- Enhance combustion efficiency, save oil and decrease the gas pollution.

ITEM NO. : CC-001

PACKING: 450ml/can

12pcs/ctn



ALL PURPOSE FOAMY CLEANER

- Multi Purpose Foamy Cleaner
- Removes stains and odors
- Refresh surfaces
- Leaves a pleasant scent
- Dissolves tough grease
- Heavy-duty formulation
- Wide range of cleaning applications

ITEM NO. : CC-002

PACKING: 650ml/can

12pcs/ctn



ENGINE DEGREASER (FOAM)

- Remove dirt, smudge and grease
- Protect the engine.
- Safe and quite handy, and can not burn.

ITEM NO. : CC-003

PACKING: 650ml/can

12pcs/ctn





FOAMING TIRE REJUVENATOR

- Permeate, clean, renew, and protection in one easy step with rich foam.
- Clean away dirt, grime and grease from tire fast.
- Effectively protect tire from UV, aging and cracking.
- Renew tire looking gloss and black, rejuvenation.
- Recommended for tires, bumpers and other rubbers.

ITEM NO. : CC-004
 PACKING: 650ml/can 12pcs/ctn



BRAKE & PARTS CLEANER

- Degreases Instantly
- Cleans fast & Dry fast
- Leaves no residue
- Powerful solvent

ITEM NO. : CC-005
 PACKING: 650ml/can 12pcs/ctn



PITCH CLEANER

- Strong infiltration and cleaning ability,
- Clean away asphalt, grease and smudges
- Applicable to automobile, metal and wheel surface.

ITEM NO. : CC-006
 PACKING: 450ml/can 12pcs/ctn



CHAIN CLEANER

- Removes Sullage and Metallic Dust Quickly
- Dissolves Dirt and Grease without Damaging Chain
- Used for Cleaning Chain and the Surface of Metal Parts

ITEM NO. : CC-007
 PACKING: 450ml/can 12pcs/ctn



RIM CLEANER

- Anti-acid
- Remove dust, dirt and stain
- Restore the rim surface luster

ITEM NO. : CC-008
 PACKING: 450ml/can 12pcs/ctn



INJECTOR CLEANER

- For fuel injection diesel, rinse the oil supply system
- Improve engine power, reduce oil wear
- Eliminate engine vibration,
- Protect from corrosion

ITEM NO. : CC-009
 PACKING: 400ml/can 12pcs/ctn



ANTIBIOTIC AIR CONDITIONER CLEANER

- Strong cleaning
- Anti-bacterial and odor removal
- Environment-friendly and energy-efficient
- Create a fresh air for good health

ITEM NO. : CC-010
 PACKING: 500ml/can 12pcs/ctn



Co Contact Cleaner

- No CFC' s.
- Excellent precision cleaning solvent.
- Quick dry.
- Leaving no residue.
- Harmless to plastics and paper tapes.
- For Electronic and electrical equipment, such as PC cards, telecommunication equipments, etc.

ITEM NO. : CC-011
 PACKING: 450ml/can 12pcs/ctn



WINDSHIELD CLEANER

- Purges oil stain attaching to glasses completely
- Prevents oil film accrediting glasses again
- Long-term efficacy of anti-fog

ITEM NO. : CC-012
 PACKING: 450ml/can 12pcs/ctn



STICKER REMOVER

- Easily torn off the window and the body of vehicle.
- Remove the paste material

ITEM NO. : CC-013
 PACKING: 450ml/can 12pcs/ctn



CAR PAINT MAINTENANCE





DIAMOND DURABLE HARD WAX

- Oiliness Wax
- Glazing, Waterproof and Anti-Ultraviolet Together
- Higher Gloss, Better Durability
- It can be used on all cars with different color

ITEM NO. : CW-001

PACKING: 50/100/300g/can 12pcs/ctn



Polish Wax

- Excellent dirt-removing, polishing,
- waterproof, anti-oxidation effect

ITEM NO. : CW-002

PACKING: 300g/can 12pcs/ctn



SUPER SOFT WAX

- Perfect for protection and glazing
- Contains a spot of abrasive
- Form a shine and lasting protection film
- Apply to all cars with different color

ITEM NO. : CW-003

PACKING: 300g/can 12pcs/ctn



COLOR BLACK WAX

- Easily removes light scratches and surfaces contaminants
- Restores clarity
- Leaves a brilliant high gloss

ITEM NO. : CW-004

PACKING: 300g/can 12pcs/ctn



Liquid Wax

- Resistant to stain and dirt, protect the paint surface;
- Enhance the smoothness and gloss of the paint surface;
- Cure the paint surface, the paint surface is smooth as new;
- Simple, quick and easy to rub.

ITEM NO. : CW-005

PACKING: 50/100/300ml/can 12pcs/ctn

CAR MAINTENANCE





DASHBOARD AND LEATHER WAX

- Excellent protection against UV, heat, fading, aging, cracking.
- Anti static function, restore color, reduce dust accumulation.

ITEM NO. : CM-001

PACKING: 450ml/can 12pcs/ctn



SUPER CHASSIS ELASTOMER(OIL BASED)

- Anti rust & waterproof for Car chassis
- Stop leaking, fix up, bumping resist and etc.
- Protect function, improve safe coefficient
- Used for vehicles, carriage and industrial field.

ITEM NO. : CM-002

PACKING: 500ml/can 12pcs/ctn



LOW TEMPERATURES STARTING FLUID

- Fast startup, low Ignition point and without detonation
- Prevent over-wear of accumulator
- Suitable for all gasoline and diesel engines

ITEM NO. : CM-003

PACKING: 450ml/can 12pcs/ctn



ICE REMOVER

- Advanced technology and Japanese formula
- Rapidly Unfreeze the frost and ice
- Can be used within -50°C .

ITEM NO. : CM-004

PACKING: 450ml/can 12pcs/ctn



DE-FROST

- Rapidly melt of ice, frost and snow
- Used on windshields, windshield wipers, frozen doors and locks.
- Environmentally friendly.

ITEM NO. : CM-005

PACKING: 450ml/can 12pcs/ctn



ANTI-MIST SPRAY

- keep transparency of windshield.
- Anti-mist
- Get rid of mist
- Widely used for windshields, glasses and mirror.

ITEM NO. : CM-006

PACKING: 250ml/can 12pcs/ctn

HOUSEHOLD CARE

Restores natural, clean shine, refreshing appearance,
effectively removes greasy dirt and stains

Experience it now





HOME AIR FRESHENER

- FEATURES & BENEFITS
- Leaves a clean, fresh-air scent
- Neutralizes odors and gets rid of bad smells from your house Ideal for use in public areas
- Customized fragrances: Flowers, Green tea, Lemon, Ocean,
- Vanilla, Lime, Woody, Lavender, Rose,
- Jasmine, Cranberry vanilla, etc

ITEM NO. : HC-001

PACKING: 330ml/can 12pcs/ctn



FURNITURE POLISH

- FEATURES & BENEFITS
- Dusts, Cleans, Shines, Polishes, Protects
- Removes finger marks, smudges, grease marks and stains
- Fresh lemon fragrance
- Leaves behind a clean, bright, hard, dust-free shine

ITEM NO. : HC-002

PACKING: 450ml/can 12pcs/ctn



CARPET CLEANER

- Lifts dirt, restore true color.
- Excellent for household carpet, car seats.

ITEM NO. : HC-003

PACKING: 400ml/can 12pcs/ctn



INSECT KILLER AEROSOL

- Kills bugs fast
- Effect of continuous up to four weeks.

ITEM NO. : HC-004

PACKING: 400ml/can 12pcs/ctn

FUNGOM[®] / RONFIX[®]

SHENZHEN JIAXUN INDUSTRIAL CO., LTD.

Add.: Room 2012, No. 37, Baoshi Road West, Longteng
Community, Shiyan Town, Bao'an District, Shenzhen, China

Tel. : 86-755-27595797

E-mail: info@fungom.com .

<http://www.fungom.com>